



GMT MONTHLY MEMBERSHIP PROGRESS REPORT

Results as of: 3/31/2019

Multiple District 43

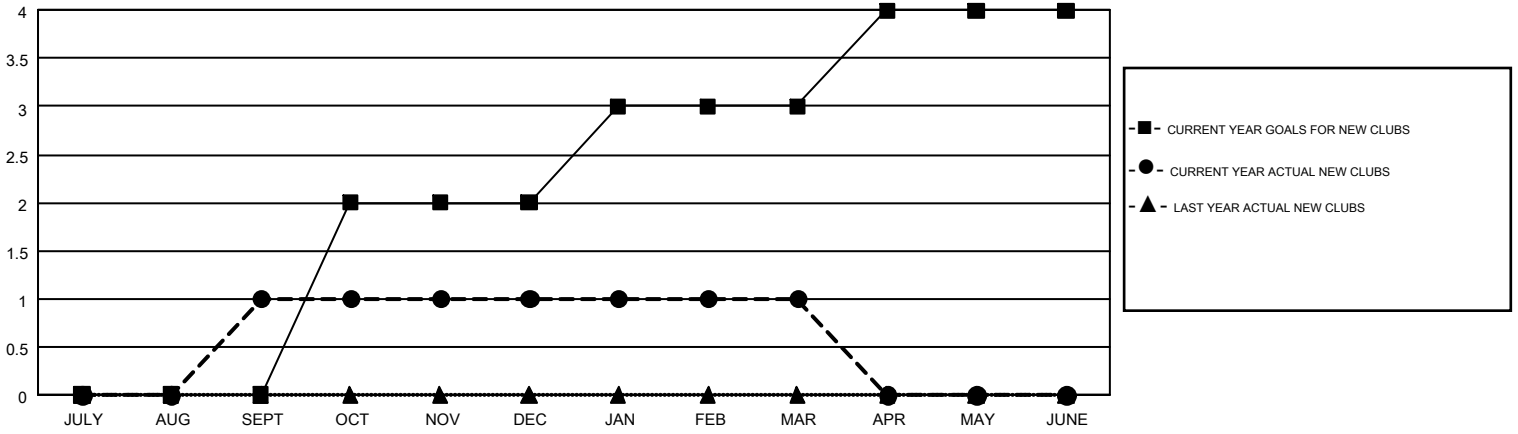
LOCATION: KENTUCKY

GMT: STEVE ANTON

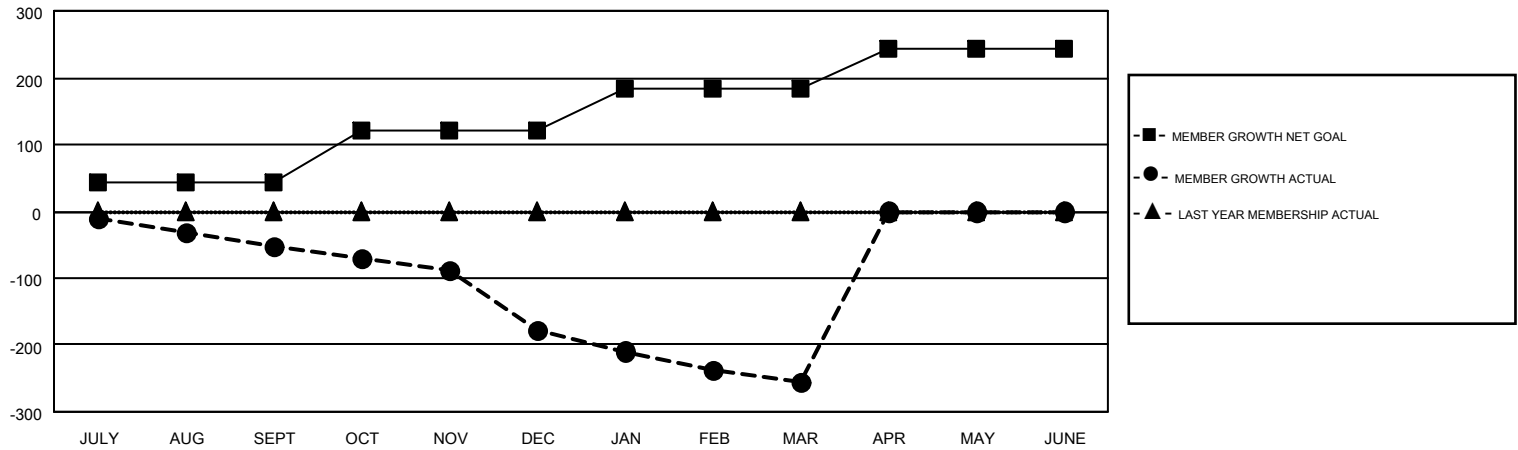
GMT CA 1

Clubs				Members			
RESULTS FOR 2018-2019				RESULTS FOR 2018-2019			
QUARTER	NEW CLUB GOAL	NEW CLUBS	DROPPED CLUBS	QUARTER	MEMBER GROWTH NET GOAL	MEMBER GROWTH ACTUAL	DROPPED MEMBERS ACTUAL (including transfers)
JULY/AUG/SEPT	0	1	2	JULY/AUG/SEPT	43	121	166
OCT/NOV/DEC	2	0	2	OCT/NOV/DEC	78	69	187
JAN/FEB/MAR	1	0	1	JAN/FEB/MAR	63	96	164
APR/MAY/JUNE	1	0	0	APR/MAY/JUNE	58	0	0

GOALS AND ACTUAL NEW CLUBS CUMULATIVE



GOALS AND ACTUAL MEMBERS CUMULATIVE



DROPPED CLUBS: 5	75 CLUBS OF 170 ADDED 1 OR MORE NEW MEMBERS	<u>GENDER DISTRIBUTION</u>	
		MALE	2,821 (66.61%)
		FEMALE	1,414 (33.39%)
<u>DROPPED MEMBERS</u>		TOTAL FAMILY UNIT MEMBERS 919	
DECEASED	60	FAMILY MEMBERS PAYING HALF DUES 472	
CLUB CANCELLED	64		
OTHER	393		
TOTAL	517		

[CLICK HERE FOR CUMULATIVE MEMBERSHIP DATA](#)